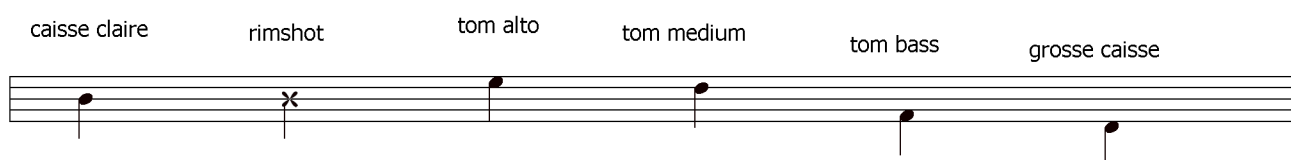


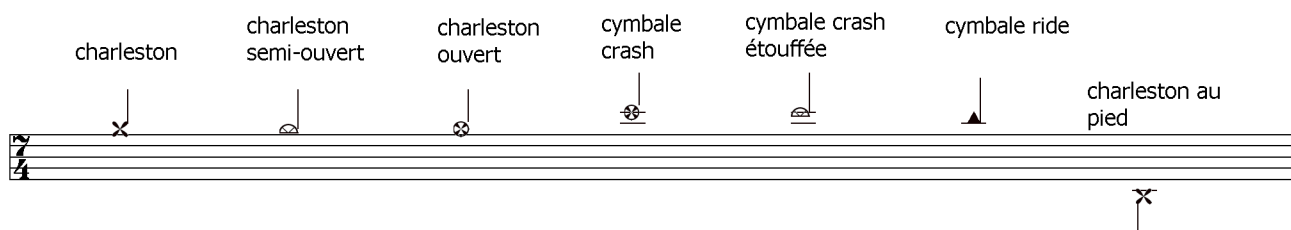
nomenclature

(ou placement des différents instruments de la batterie sur la portée).

Les Peaux



Les Métaux



- Abreviations :

- Tom alto = T1
- Tom medium = T2
- Tom bass = T3
- caisse claire = C.C.
- grosse caisse = G.C.
- rimshot = R.S. (caisse claire frappée sur le bord).
- charleston = h.h.
- cymbale ride = C.R.

how you remind me

♩ = 86

compositeur: nickelback

The image displays a musical score for guitar and bass. It begins with a 4/4 time signature and a tempo marking of 86 beats per minute. The guitar part starts with a barre at the fifth fret, indicated by a '5' above the staff. The score consists of eight systems, each with a guitar staff and a bass staff. The guitar part features a mix of chords, single notes, and rhythmic patterns, including several measures of muted notes (marked with 'x'). The bass part provides a steady accompaniment with a consistent rhythmic pattern. The notation includes various musical symbols such as stems, beams, and accidentals.

Musical notation for the first system. The top staff is a treble clef staff containing a sequence of notes and rests, including a triplet of eighth notes. The bottom staff is a bass clef staff with two double bar lines and the number 2 above each, indicating a second ending.

Musical notation for the second system. The top staff is a treble clef staff with notes and rests. The bottom staff is a bass clef staff with a double bar line and the number 8 above it, indicating an eight-measure rest.

Musical notation for the third system. The top staff is a treble clef staff with notes and rests, including a triplet of eighth notes. The bottom staff is a bass clef staff with notes and rests.

Musical notation for the fourth system. The top staff is a treble clef staff with notes and rests. The bottom staff is a bass clef staff with notes and rests.

Musical notation for the fifth system. The top staff is a treble clef staff with notes and rests. The bottom staff is a bass clef staff with notes and rests.

Musical notation for the sixth system. The top staff is a treble clef staff with notes and rests. The bottom staff is a bass clef staff with notes and rests.

Musical notation for the seventh system. The top staff is a treble clef staff with notes and rests. The bottom staff is a bass clef staff with notes and rests.